



## QUICKFAB ELECTRICAL PREFAB ASSEMBLIES

### BETTER PRODUCTIVITY

Fastrack hot jobs while enjoying better productivity from field and office personnel. Spend less time doing take-offs, installing devices, and sorting through components. Install finished assemblies with devices faster than you can rough-in.

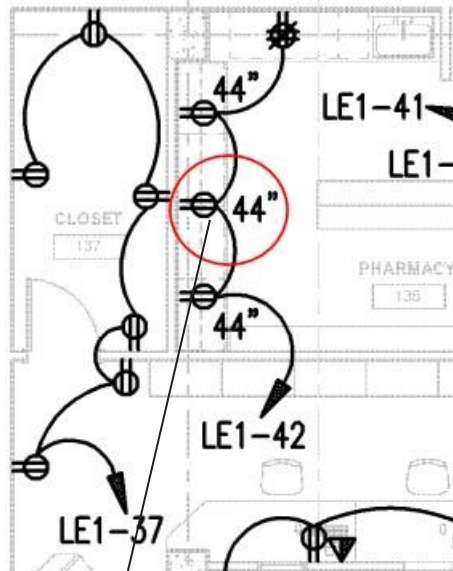
### BETTER PRICE

HPH Quickfab assemblies are simply less expensive than other prefab suppliers. Lean manufacturing with no corporate overhead or agent commissions saves Contractors money.

### BETTER PREFAB

High quality components are sturdy, cost effective and easy to install. HPH Products is a pioneer in electrical prefab, concentrating only on prefabricated branch wiring systems and devices. Contractor specifies device brand and type, not the prefab manufacturer.

JUST SEND US YOUR DRAWING (PDF) OR COUNTS AND WE WILL SEND YOU THE SAVINGS.



From your drawings.

		TOTAL	E402	E403
Φ	FR-34	220	69	73
⊖	WR-34	19	6	4
⚡	FRR-34	9	7	1
▶	TV-34	47	10	18
⚡	WG-34	24	6	6
	TOTAL		E302	E303
Ⓢ	WS-34	123	32	49
Ⓢ	WSR-34	10	7	6

To an accurate takeoff and quote.

UNION ASSEMBLED  
(IBEW 1158 LABEL).

HIGH QUALITY  
COMPONENTS MADE IN  
THE USA.

FAST ACCURATE TAKE-  
OFFS AND QUOTES  
PROVIDED.

UL LISTED ASSEMBLIES  
PROVIDED WITH OR  
WITHOUT MC CABLE  
WHIPS



To an easy to identify Prefab assembly..



**HPH PRODUCTS INC.**  
182 CARLTON AVE.  
EWING, NJ 08618  
PH (609) 883-0052  
FX (609) 883-8442  
[WWW.HPHPRODUCTS.COM](http://WWW.HPHPRODUCTS.COM)  
[SALES@HPHPRODUCTS.COM](mailto:SALES@HPHPRODUCTS.COM)



E233839

*We could have made prefab more complicated, but our competition beat us to it.  
Sold exclusively through qualified Electrical Distributors. All rights reserved.*



## A SERIES PREFAB ASSEMBLIES

### DEVICES

ANY COMMERICALLY AVAILABLE DEVICES CAN BE PROVIDED.

### STANDARD PARTS

SOLID GREEN THHN BOX  
GROUND  
SPECIFIED DEVICE(S)  
ADJUSTABLE MUDRING\*  
STRANDED THHN PIG-  
TAILS  
WAGO CONNECTORS  
STURDY STEEL COVER  
WITH PLASTIC LINER TO  
PROTECT DEVICE DUR-  
ING DRYWALLING.  
ALL DEVICES EXCEPT  
USBS ARE TAPED.

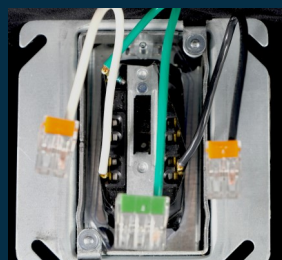


PART NUMBER	DEVICE
MR	DUPLEX
MRswi	SWITCHED DUPLEX
MG	GFI
MU	USB
MRR	QUAD
MS	1POLE
MSS	2-1POLE
MS3	3 WAY
MS3S	3 WAY & 1POLE
MS3S3	2-3WAY
MSSS	3-1POLE

*ADD A BEFORE PART NUMBER FOR ADJUSTABLE MUDRING (AMR)*

*ADD A DEVICE NUMBER AFTER PART NUMBER (AMR5362W)*

*IF FIXED MUDRING SPECIFY DRYWALL THICKNESS (58MR5362W)*



**HPH PRODUCTS INC.**  
182 CARLTON AVE.  
EWING, NJ 08618



E233839